

Color imageCLASS X MF1538C

Print up to 40 ppm (Color)

Print up to 8-1/2" x 14"

2,300-sheet maximum paper capacity

Supports uniFLOW and uniFLOW Online

Designed for small- to mid-size workgroups within an office or home environment used as part of an organization's print fleet, the Canon imageCLASS X MF1538C printer offers speedy performance, minimal maintenance, and the ability to expand paper capacity for busy groups. Print, copy, scan, and fax capabilities help you accomplish necessary task with just one machine. Delivering an intuitive user experience, the 7" color touchscreen can be customized to simplify many daily tasks.



WORKFLOW EFFICIENCY

- 7" intuitive color touchscreen with smartphone-like usability.
- A unique, customized device experience tailored to individual preferences.
- Supports certain compatible mobile solutions for printing and scanning.¹
- Scan and convert documents to searchable digital files through a single-pass, duplex document feeder.
- Designed for small print jobs with first-print-out time as fast as 6 seconds.
- Provides consistency with the imageRUNNER ADVANCE DX Series.



SECURITY FEATURES

- Helps reduce the risk of confidential information loss, since documents are only stored in short-term memory.
- With imageWARE Enterprise Management Console Device Configuration Manager Plug-in, security settings can be captured and exported to other devices on the same network.²
- Remotely control device access and set rules via optional uniFLOW or uniFLOW Online.
- Limit document distribution by implementing Send-to-Myself-only.
- Verify System at Startup is a process to help verify the validity of the device, firmware, and applications from unauthorized modifications.
- McAfee Embedded Control* utilizes a whitelist to protect against malware and tampering of firmware and applications.



COST MANAGEMENT

- Leverage optional uniFLOW or uniFLOW Online for full accounting and reporting for Canon and third-party devices, pull printing, and job routing.
- Service parts are designed for machine's life cycle to help minimize the need for proactive maintenance and potentially reduce service calls.
- High-capacity, all-in-one cartridge helps reduce overall supply costs.
- Out-of-the-box, standard, two-sided printing plus the ability to print multiple pages onto one sheet help to reduce paper consumption.

* This feature is off by default and must be turned on by the user. Warm-up times are affected once turned on.



DEVICE AND FLEET MANAGEMENT

- Designed for quick, easy deployment.
- Remote diagnostics for rapid service response.
- Easily monitor device status and consumable levels, observe meter readings, manage settings, and implement security settings.



QUALITY AND RELIABILITY

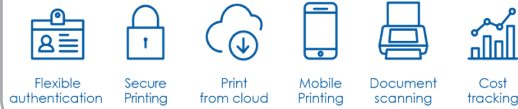
- Canon's signature reliability and engine technologies help keep productivity high and minimize the impact on support resources.
- Designed to achieve maximum uptime with status notifications to help keep supplies replenished.
- Intuitive maintenance videos for common tasks like consumables replacement.



SUSTAINABILITY

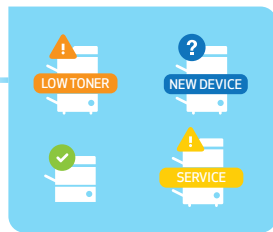
- A combination of fusing technologies and low-melting-point toner minimizes power requirements and helps achieve lower energy consumption.
- Encourages environmentally conscious work practices by enabling multiple settings that can help save paper and energy.
- ENERGY STAR® certified and currently rated EPEAT® Silver.³

KEY FEATURES



MANAGE OUTPUT WITH uniFLOW Online

The optional uniFLOW Online offers a cloud-based printing, scanning, and accounting solution that's easy to configure and has the latest security features. The solution extends the standard functionality provided by uniFLOW Online Express by adding My Print and Scan Anywhere, mobile printing, and more, to support users whether they're in the office or at home.



FLEET MANAGEMENT TOOLS

imageWARE Enterprise Management Console can be used by a device administrator to centrally manage the Canon printer fleet, including consumables, status notifications, meters, and configuration settings. imageWARE Remote software allows for the service provider to manage devices proactively, including remote diagnosis and reporting. Local Content Delivery System facilitates remote firmware download at the device level.

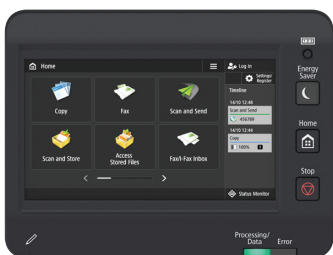


FAST, SINGLE-PASS DUPLEX SCANNING

The Color imageCLASS X MF1538C model leverages a single-pass document feeder for two-sided scanning at up to 51 images per minute (ipm) in black-and-white or up to 27 ipm in color. Easily scan directly to PC, USB, email, or the network. Scanned files can be converted into multiple file formats, including Hi-Compression PDF and Searchable PDF (OCR).



Single-Pass 2-Sided Scan



INTUITIVE 7" COLOR TOUCH PANEL

Unique to the imageCLASS X product line, the 7" color touch panel allows for simple navigation through each feature available on your imageCLASS X MF1538C. Similar usability to the imageRUNNER ADVANCE DX UI, you can customize your home screen and create new buttons per user preference needs.

Main Unit

Core Functions

Standard: Print, Copy, Scan, Send, Fax

Processor

1 GHz Dual Core Processor

Control Panel

7" TFT LCD WVGA Color Touch Panel

Memory

2 GB

Standard Interface Connection

USB 2.0 x2 (Host), USB 2.0 x1 (Device) High-Speed,
10/100/1000Base-T Ethernet (Network), Wi-Fi 802.11b/g/n

Paper Capacity (Letter, 20 lb. Bond)

Standard: 650 Sheets
Maximum: 2,300 Sheets

Paper Sources (Letter, 20 lb. Bond)

Standard: 550-sheet Paper Cassette,
100-sheet Stack Bypass
Optional: 550-sheet Paper Cassettes

Paper Output Capacity (Letter, 20 lb. Bond)

Standard: 200 Sheets

Supported Media Types

Cassette: Thin, Plain, Recycled, Color, Heavy,
Pre-punched, Bond, Labels
Stack Bypass: Thin, Plain, Recycled, Color, Heavy, Bond,
Pre-punched, Envelope, PostCard

Supported Media Sizes

Cassette: Letter, Legal, Statement, Executive,
Envelope: COM10, Monarch, C5, DL,
Custom (Min. 3" x 5" to Max. 8.5" x 14")
Stack Bypass: Letter, Legal, Statement, Executive
Envelope: COM10, Monarch, C5, DL
Custom (Min. 3" x 5" to Max. 8.5" x 14")

Supported Media Weights

Cassettes: 16 lb. Bond to 43 lb. Bond
(60 to 163 g/m²)
16 lb. Bond to 58 lb. Bond
Stack Bypass: (60 to 216 g/m²)

Warm-Up Time

From Power On: 12 Seconds or Less
From Sleep Mode: 10 Seconds or Less

Dimensions (W x D x H)

Standard: 19.7" x 21.9" x 25.2"
(Desktop): (500 mm x 556 mm x 640 mm)

Installation Space (W x D)

Standard: 28.2" x 31" (717 mm x 785 mm)
(Desktop):
Fully: 32.1" x 34" (815 mm x 864 mm)
Configured: (With two Paper Feeder PF-D1 and
Cassette Feeding Unit-AV1)

Weight⁴

Unit: Approx. 90.4 lb. (41 kg)

Supported OS

Windows® 7/Windows 8.1/Windows 10/Windows Server
2008/Windows Server 2008 R2/Windows Server 2012/
Windows Server 2012 R2/Windows Server 2016/Mac OS X
v10.10 (or later)

Print Specifications

Printing Method

Laser Beam Printing

Print Speed (Color)⁵

Up to 40 ppm (Letter)

First-Print-Out Time

Approx. 6 Seconds

Recommended Monthly Page Volume

2,000 - 4,000 Pages

Print Resolution (dpi)

600 x 600

Standard Page Description Languages

UFR II, PCL®6, PCL®5, Adobe PostScript® 3™

Printing from Mobile and Cloud-based Services¹

Apple® AirPrint®, Canon PRINT Business, Mopria™ Print
Service, Universal Print, uniFLOW Secure Mobile Printing⁶

Fonts

PCL: 93 Fonts
PS: 136 Fonts

Print Features

Secure Print, Secure Watermark, Header/Footer, Page
Layout, Two-sided Printing, Mixed Paper Sizes/ Orientations,
Toner Reduction, Poster Printing, Forced Hold Printing, Print
Date, Scheduled Printing, Printing Using a Virtual Printer

Copy Specifications

First-Copy-Out Time (Letter)

Approx. 5.9 Seconds/6.9 seconds or Less (BW/Color)

Copy Resolution (dpi)

600 x 600

Copy Size

Platen: Up to Letter
ADF: Up to Legal

Multiple Copies

Up to 999 Copies

Magnification

25% - 400% (1% Increments)

Preset Reductions

25%, 50%, 70%

Preset Enlargements

141%, 200%, 400%

Copy Features

Preset R/E Ratios by Area, Two-Sided, Density Adjustment,
Original Type Selection, Interrupt Mode, Two-sided Original,
Sort, Job Build, N on 1, Sharpness, Erase Frame, Copy ID Card,
Skip Blank Pages, Color Mode, Reserved Copy, Copy Sample

Scan Specifications

Type

Single-Pass Duplexing Automatic Document Feeder

Document Feeder Paper Capacity

100 Sheets (20 lb. Bond)

Document Feeder Supported Media Sizes

Letter, Legal, Statement, Custom Size: 1.9" x 5" to
8.5" x 14" (48 mm x 128 mm to 216 mm x 355.6 mm)

Document Feeder Supported Media Weights

15.5 lb. Cover to 47.3 lb. Cover (42 to 128 g/m²)

Platen Acceptable Originals

Sheet, Book

Pull Scan

Color Network ScanGear 2 for both TWAIN and WIA

Scan Resolution (dpi)

Up to 600 x 600

Scan-to-Mobile Devices

Canon PRINT Business

Scan Speed (Letter) (BW/Color)

Single-sided: 100/100 (300 dpi), 50/50 (600 dpi)
Double-sided: 155/150 (300 dpi), 50/50 (600 dpi)

Memory Media

Standard USB Memory (JPEG, TIFF, PDF)

Send Specifications

Destination

E-mail/Internet FAX (SMTP), Super G3 FAX, SMB3.0, FTP,
WebDAV

Address Book

LDAP (2,000)/Local (1,600)/Speed dial (200)

Send Resolution (dpi)

Push/Pull: Up to 600 x 600

Communication Protocol

File: FTP (TCP/IP), SMB (TCP/IP), WebDAV
Email/iFax: SMTP (Send), POP3 (Receive)

File Format

Standard: TIFF, JPEG, PDF (Compact, Searchable,
Encrypted), XPS (Compact, Searchable),
PDF/XPS (Device Signature, Office Open
XML (PowerPoint®, Word)
PDF (Trace & Smooth), PDF/XPS (User
Signature)
Optional:

Fax Specifications

Modem Speed

Super G3: 33.6 Kbps
G3: 14.4 Kbps

Compression Method

MH, MR, MMR, JBIG

Resolution (dpi)

400 x 400, 200 x 400, 200 x 200, 200 x 100

Sending/Recording Size

Statement to Legal

Fax Memory

Up to 30,000 Pages

Speed Dials

Max. 200

Group Dials/Destinations

Max. 199 Dials

Sequential Broadcast

Max. 256 Addresses

Memory Backup

Yes

Security Specifications

Authentication and Access Control

User Authentication (Picture Login, Picture and PIN Login,
Username and Password Login, Function Level Login, Mobile
Login), Department ID Authentication (Department ID and
PIN Login, Function Level Login), uniFLOW Online Express
(PIN Login, Picture Login, Picture and PIN Login, Card
Login, Card and PIN Login, Username and Password Login,
Department ID and PIN Login, Function Level Login), Access
Management System (Access Control)

Document

Print Security (Secure Print, Encrypted Secure Print,
Forced Hold Printing, uniFLOW Secure Print®), Receive
Data Security (Confidential Fax Inbox Forwarding Received
Documents Automatically), Scan Security (Encrypted
PDF, Device Signature, User Signature PDF/XPS®), Send
Data Security (Setting for requesting password input
per transmission, Restricted E-mail/File send functions,
Confirming FAX Number, Allow/Restrict Fax Driver
Transmissions, Allow/Restrict Sending from History,
S/MIME Support)

Network

TLS 1.3, IPsec, IEEE802.1X authentication, SNMPv3, Firewall
Functionality/IP/MAC Address Filtering), Dual Network
Support (Wired LAN/Wireless LAN, Wired LAN/Wired
LAN), Enabling/Disabling (Network Applications, Remote
UI, USB Interface), G3 FAX separation from LAN, USB Port
separation from LAN, Scan and Send -Virus Concerns for
E-mail Reception

Device

Standard Storage Initialize, Job Log Conceal Function,
Verify System at Startup, Runtime Intrusion Detection with
McAfee Embedded Control

Device Management and Auditing

Administrator Password, Digital Certificate and Key
Management, Audit Log, Cooperating with External
Security Audit System (Security Information and Event
Management), Security Policy Setting

Environmental Specifications

Operating Environment

Temperature: 50 to 86° F
Humidity: 20 to 80% RH (Relative Humidity)

Power Requirements

110-127V, 60Hz, 7.2A

Power Consumption

Maximum: Approx. 1500 W
Standby: Approx. 33.9 W
Sleep Mode: Approx. 1.1 W

Typical
Electricity
Consumption
(TEC) Rating:⁸ 0.43 kWh

Standards

ENERGY STAR® Qualified, Currently Rated EPEAT Silver³



OPTIONAL PAPER FEEDER PF-DI¹²



OPTIONAL CASSETTE
FEEDING UNIT-AV1



OPTIONAL CABINET TYPE-P

Accessories

Card Readers⁹

MiCard Readers¹⁰

Proximity card reader designed to be used with uniFLOW for card authentication.

Copy Card Reader-F1

Department ID authentication with Canon magnetic stripe cards.

Print/Scan Accessories

Barcode Print Kit-E1

Installs bar code fonts for bar code printing.

Send PDF Security Kit-E1

Send encrypted PDFs and add digital device signatures.

Extended Service Packs

Canon eCarePAK

Canon Extended Service Plans offer coverage beyond the standard one-year limited warranty¹¹ up to four years.

GENUINE CONSUMABLES



Toner T10 Black	Yields up to 13,000 Pages
Toner T10 Cyan	Yields up to 10,000 Pages
Toner T10 Magenta	Yields up to 10,000 Pages
Toner T10 Yellow	Yields up to 10,000 Pages

Use of Canon GENUINE toner cartridges helps provide longer equipment life, high yields, reliable performance, high-quality output, and minimal jamming or issues. Black Toner (yielding 6,000 pages) and C/M/Y Toners (yielding 5,000 pages each) are included in the box.

¹ Canon PRINT Business is a free app available on the App Store® and Google Play™ Store. For more information, including compatibility, please visit <https://www.usa.canon.com/mobile-app>. Please see the respective websites for Apple AirPrint and Mopria Print Service for compatibility and additional information.

² Please reference user manuals for details on settings available to export.

³ For latest EPEAT ratings (Gold/Silver/Bronze), please visit www.epeat.net.

⁴ Includes consumables.

⁵ Print speed is based on internal testing. Print speed may vary, depending on the number of copies selected as well as the settings for size, type, and orientation of paper.

⁶ Requires optional uniFLOW Online/uniFLOW.

⁷ Requires optional Universal Send Digital User Signature Kit-C1.

⁸ Based on ENERGY STAR Product Specification for Imaging Equipment Version 3.0.

⁹ Attachment kit required.

¹⁰ Ask Dealer for reader compatibility information.

¹¹ Limited warranty program is subject to certain conditions and restrictions. See warranty card for details.

¹² Maximum two Paper Feeder PF-DI with Cassette Feeding Unit-AV1. Maximum three Paper Feeder PF-DI with Cabinet Type-P.

Canon

usa.canon.com



As an ENERGY STAR partner, Canon U.S.A., Inc. has qualified this model as meeting the ENERGY STAR energy efficiency criteria through an EPA recognized certification body. ENERGY STAR and the ENERGY STAR mark are registered U.S. marks. Canon, imageCLASS, and the GENUINE logo are registered trademarks of Canon Inc. in the United States and may also be registered trademarks or trademarks in other countries. uniFLOW is a registered trademark of NT-ware Systemprogrammierung GmbH. Wi-Fi is a registered trademark of the Wi-Fi Alliance. Android and Google Play are trademarks of Google Inc. iPad, iPhone, iPod touch, Mac, and the App Store are trademarks of Apple Inc., registered in the United States and/or other countries. AirPrint and the AirPrint logo are trademarks of Apple Inc. Mopria and the Mopria logo are trademarks of the Mopria Alliance, Inc. Windows and Windows Server are trademarks of Microsoft Inc. in the United States and/or other countries. All other referenced product names and marks are trademarks of their respective owners. Canon products offer certain security features, yet many variables can impact the security of your devices and data. Canon does not warrant that use of these features will prevent security issues. Nothing herein should be construed as legal or regulatory advice concerning applicable laws; customers must have their own qualified counsel determine the feasibility of a solution as it relates to regulatory and statutory compliance. Specifications and availability subject to change without notice. Not responsible for typographical errors.

©2021 Canon U.S.A., Inc. All rights reserved.

112IRI-iCXMFI538C-PDF-IH

Trellix

CANON
GENUINE
TONER, CARTRIDGE
& PARTS

